

SeaTalk¹ <-> NMEA Bridge

Installation and Operation Manual

Version : Bridge128SD
Software Version 3.17
Dec 2025



¹ SeaTalk is Reg. Trademark of Raymarine Inc.

Credits / Warning / Disclaimer

The protocol converter is a
RESEARCH PROJECT

It is used for research on data communication, computer communication and data conversion on computers used on board boats.

Hard- and Software are still under development and have NOT been fully tested. Malfunctions of the protocol converter and of any connected device are possible at any time.

The protocol converter could cause damage to connected devices.

Liability **cannot** be accepted for any damages, personal injuries or malfunctions caused by the converter.

There are no SeaTalk technical specifications available from the manufacturer. We have used the Technical Reference of the SeaTalk protocol, compiled by Thomas Knauf. See <http://www.thomas-knauf.de/seatalk.htm> .Thank you to Thomas Knauf for his work.

Do not use as primary navigation device

This device should be used only as an aid to navigation and should never replace common-sense and good seamanship. Always maintain a permanent watch so that you can respond to any **situations as they develop**.

This device and the cables connected should be placed :

- At least 2 meters from any equipment transmitting radio signals. (e.g. VHF, Antennas,..)
- More than 2 meters from the path of a radar beam or SSB transmitting equipment

Always check the installation and function of the SeaTalk NMEA bridge and of any other navigation device on board before going to sea.

SeaTalk <-> NMEA Bridge

Contents

CREDITS / WARNING / DISCLAIMER	2
OVERVIEW	4
CONNECTIONS	5
POWER SUPPLY	5
SEATALK CONNECTION	5
NMEA CONNECTION	6
RS232 CONNECTION	7
USB PC PORT	8
DISPLAY AND KEYS	9
DISPLAY	9
KEY FUNCTIONS :	10
INSTALLATION AND COMMISSIONING	11
MOUNTING	11
USB DRIVER INSTALLATION	12
USB COM PORT ASSIGNMENT	12
NMEA INPUT- AND OUTPUT PORT SELECTION	13
CONNECTION EXAMPLES	13
DATA FLOW	14
NMEA INPUT	15
NMEA OUTPUT	16
SEATALK INPUT	17
SEATALK OUTPUT	18
SAME TYPE OF DATA ON NMEA & SEATALK	18
SPECIAL FUNCTIONS AND CONFIGURATION	19
CONFIGURATION SCREEN	19
CONFIGURATION EXAMPLE	20
CONFIGURATION COMMANDS	21
CONFIGURATION PC SOFTWARE	22
CONFIGURATION Id's	23
SPECIAL NMEA LIKE COMMANDS	26
THE \$STALK SENTENCE	26
THE \$SWVERSION COMMAND	26
SOFTWARE UPDATE (CONFIG TOOL)	27
SOFTWARE UPDATE (MEGALOAD)	29
BOOTSTRAP LOADER METHOD	29
SEATALK & NMEA CONVERSION TABLE	30
TECHNICAL DATA	31
NEWS AND INFO ON THE WEB	31
CHANGE HISTORY	32

SeaTalk <-> NMEA Bridge

Overview

The converter interconnects two different data communication systems – SeaTalk² and NMEA 0183.

- Information from the SeaTalk network is transformed into NMEA Data and sent to the NMEA ports.
- Information from the NMEA ports is transformed into SeaTalk data and sent to the SeaTalk bus.
- SeaTalk and NMEA data are shown on a LCD display.



This converter has detachable terminals for :

- Power supply
- SeaTalk port (SeaTalk IN (galvanic isolated) and OUT (galvanic isolated))
- NMEA port (NMEA IN (galvanic isolated) and OUT)
- RS232 port (NMEA IN and OUT)
- USB computer port (NMEA IN and OUT)



² SeaTalk is Reg. Trademark of Raymarine Inc.
SeaTalk NMEA Bridge 128SD Sw Version 3.17

SeaTalk <-> NMEA Bridge

Connections

Power Supply

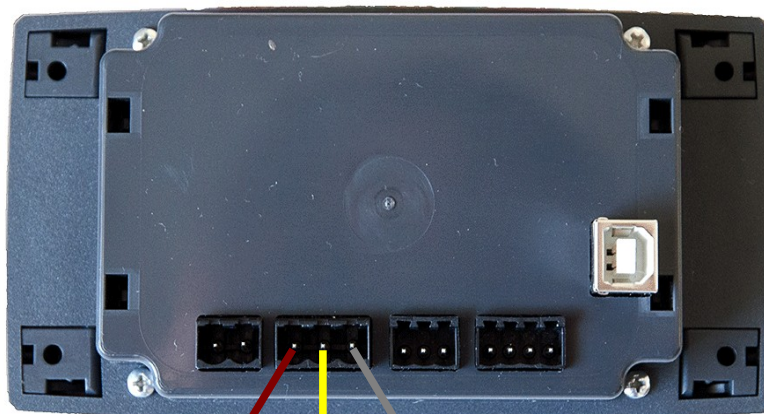
The bridge takes its power supply from +12V and GND.

12 Volt DC power supply (e.g. from battery) must be protected with a 1 amp circuit breaker or fuse. The bridge consumes approx 60 mA in idle mode, 50 mA when backlight is switched off and can consume temporarily up to 100 mA when sending data.



GND +12 Volt

SeaTalk connection



+12 Volt SeaTalk GND
Red Data Silver
Yellow

A 3-Pin terminal is used for the connection to the SeaTalk bus.

Please double check for correct connection. A wrong connection could damage the converter or other devices on the SeaTalk Bus.

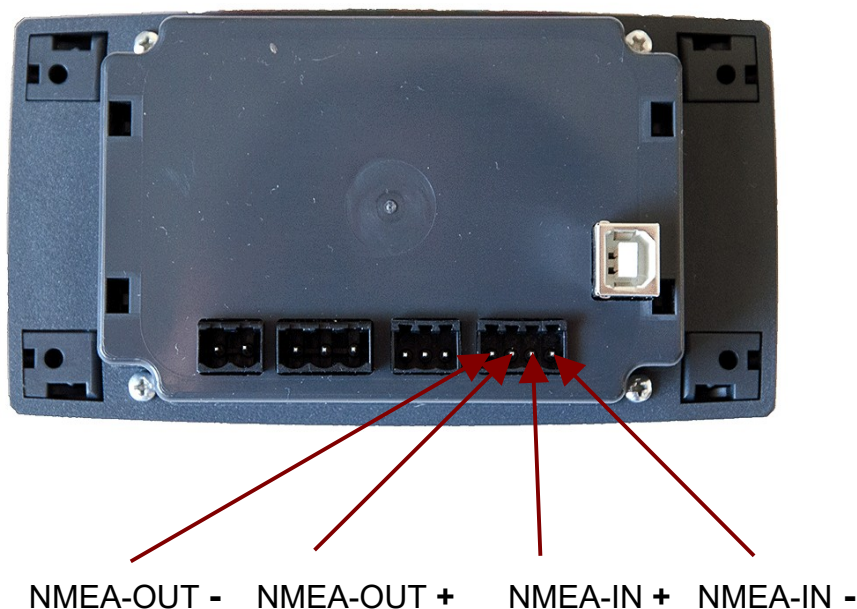
SeaTalk <-> NMEA Bridge

NMEA Connection

The board has

- 1 * NMEA-IN³
- 1 * NMEA-OUT port.

The NMEA-**IN** port is used to **receive data** from standard NMEA devices like GPS etc. This standard NMEA devices usually have terminals marked with NMEA OUT+, NMEA OUT-. (On some devices the ports are marked NMEA-OUT-A, NMEA-OUT-B)



The NMEA-**OUT** port is used to **send data** to standard NMEA devices like GPS, VHF etc. This standard NMEA devices usually have terminals marked with NMEA IN+, NMEA IN- (On some devices the ports are marked NMEA-IN-A, NMEA-IN-B)

When connecting the NMEA devices, please double check wiring. It is indeed possible to damage the device or devices attached if IN and OUT are reversed. Some devices have NMEA-OUT – or NMEA-IN – wired to GND internally. If, for example, NMEA-IN+ should accidentally be connected to GND, the Bridge could be damaged.

³ IN-Port can be switched between NMEA-IN and RS232 RxD. See page 14 - NMEA Input- and Output Port selection
SeaTalk NMEA Bridge 128SD Sw Version 3.17

SeaTalk <-> NMEA Bridge

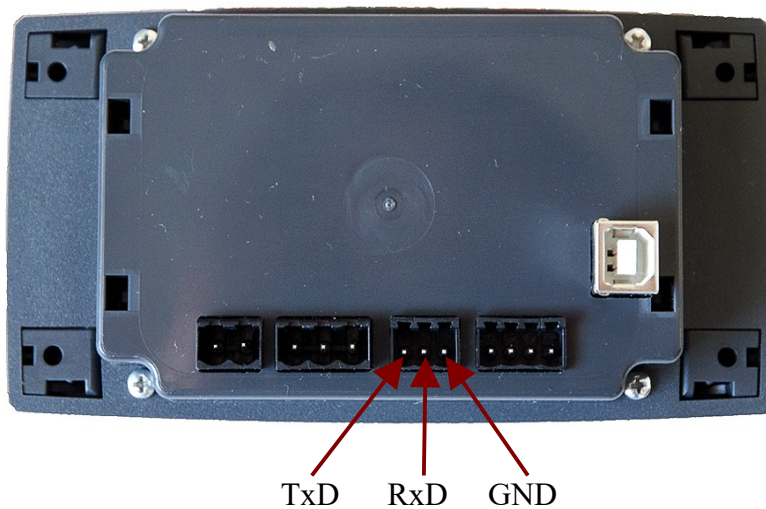
RS232 Connection

The board has

1 * RS232 port for reading⁴ and writing NMEA data

The RS232 port is used to send and receive data to/from a standard NMEA device that has an RS232 port instead of a NMEA port. Many GPS devices, i.e. hand-held GPS, have RS232 ports instead of NMEA ports.

The RS232 port can also be used to connect the bridge to a computer that only has a serial port but no USB port.

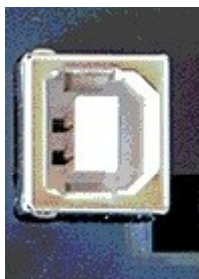


⁴ IN-port can be switched between NMEA-IN and RS232 RxD. See page 14 - NMEA Input- and Output Port selection
SeaTalk NMEA Bridge 128SD Sw Version 3.17

SeaTalk <-> NMEA Bridge

USB PC Port

The board has
1 * USB port for PC connection.



The USB Port speed is currently fixed to 4800 Baud.

The bridge has one USB port. It can be used to connect it to a computer or notebook. After connection the bridge, a new serial port will be available on your computer (See Page 13 – Com Port assignment)
With this serial port, the computer can act as a NMEA sender and as a NMEA receiver. It can receive data from the devices attached to the bridge, and it can send data to this devices.
In every navigation software, an option can be found to select the serial port to be used.

SeaTalk <-> NMEA Bridge

Display and Keys

The SeaTalk NMEA bridge has a 4 * 20 character display and 7 push buttons.

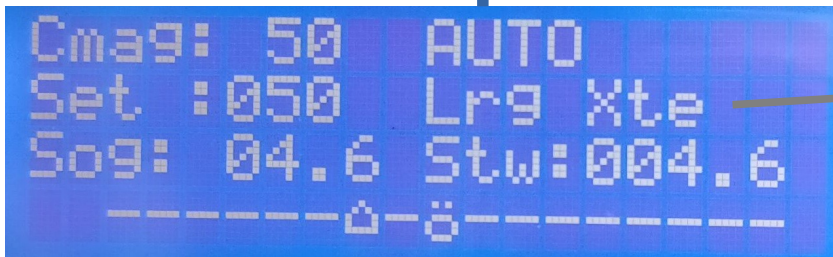
Display

The display shows SeaTalk and NMEA data.

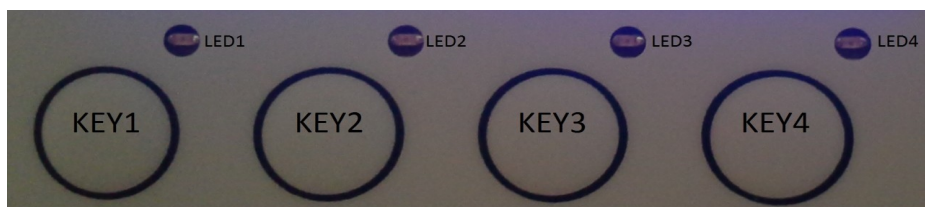
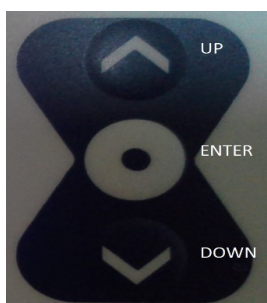
It has 6 pages, selectable by Key-1 to Key-4 and Key3-Pressed long, Key4-pressed long.

<p>Page 1 – select by Key-1</p> <p>Speed t. water over ground Depth Temperature Position Course true Position Course magnetic</p>	
<p>Page 2 - select by Key-2</p> <p>Wind speed Wind direction Course magnetic Course true Trip mileage Total mileage UTC Time</p>	
<p>Page 3 - select by Key-3</p> <p>Waypoint data</p> <p>From WP Name To Wp Name XTE Bearing to Wp Distance Course Speed t. water Speed o. ground</p>	
<p>Page 4 - select by Key-4</p> <p>Speed over ground</p>	
<p>Page 5 - press Key-3 for 5 seconds Wind Data</p> <p>True/App wind speed True/App wind direction</p> <p>Key-Up/Down selects true/apparent wind data Press any Key for more than 5 seconds to return to Page 1</p>	

SeaTalk <-> NMEA Bridge

<p>Page 6 – press Key-4 for 5 seconds</p> <p>Autopilot data and control</p> <p>Key 1 +10 Degrees Key 2 +1 Degrees Key 3 -10 Degrees Key 4 -1 Degrees Key Up Auto Key Down Standby Key Enter Track</p> <p>Press any Key for more than 5 seconds to return to Page 1</p>	<p style="text-align: center;">STBY, AUTO, WIND, TRACK</p>  <p style="text-align: right;">No Data, Lrg XTE, AutoRel,</p>
---	--

Key functions :



Key	Function
Key 1	Select display page 1
Key 2	Select display page 2
Key 3	Select display page 3
Key 4	Select display page 4
Key 3 (5 seconds)	Select wind data page
Key 4 (5 seconds)	Select autopilot page

SeaTalk <-> NMEA Bridge

Key Down	Select next display page
Key Up	Select previous display page
Key Enter	Display illumination on/off
Key Enter pressed for 5 seconds	Configuration menu
Key Up pressed for 5 seconds	NMEA & RS232 loopback test

Installation and commissioning

Mounting

Before starting the installation, you should take some time to find the best position for the instrument.

Of course it should be placed so that the display is easily readable and the push buttons are easily accessible. It must be placed in a dry and ventilated place.

Make sure that there is enough space behind the instrument to accommodate the instrument connectors and cables.

The instrument and its cables must be placed at least 1 meter (3 ft) from any equipment transmitting or cables carrying radio signals. In case of SSB radio, the distance should be at least 2 meters (6 ft).

- Apply the drill template (supplied at the rear of this handbook).
- Drill out the four 3mm holes.
- Cut out the clearance hole.
- Remove the template.
- Remove the cover for the screws by gently sliding it sideways.
- Mount the instrument into the panel.
- Fix the instrument with 4 * 3mm screws.
- Put back on the cover on both sides.



3mm holes

cover

USB Driver installation

Depending on the operating system of the computer, it might be necessary to install a driver software. The bridge is using a standard FTDI USB serial converter chip. Drivers for this chip can be found on the CD and on the FTDI webpages.
(<http://www.ftdichip.com/FTDrivers.htm>)

Linux

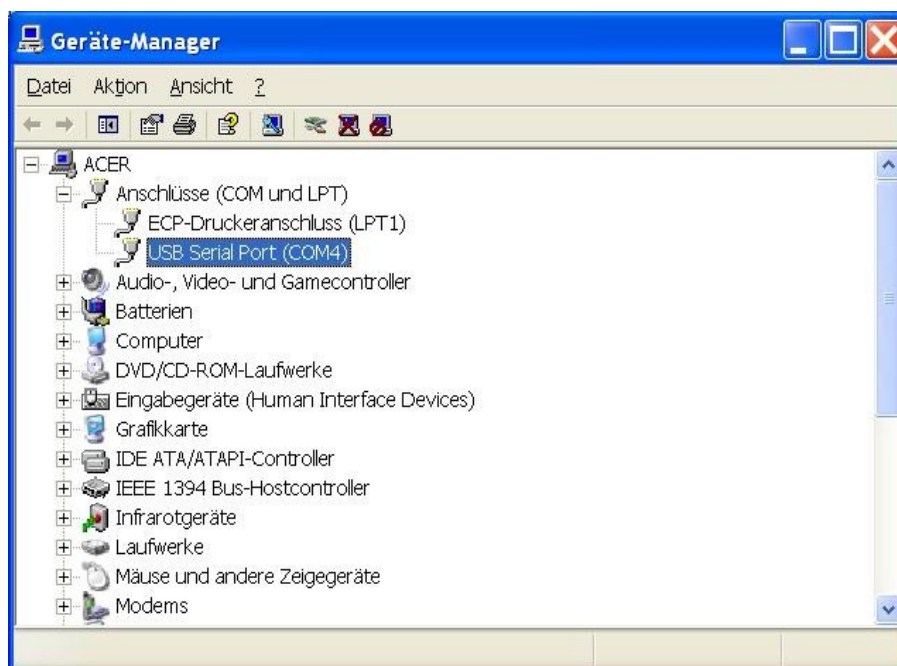
A reasonable modern LINUX system does not need a special driver installation. The FTDI chip will be recognized and the system will provide a new serial port. Usually this is `/dev/ttyUSB0`. If there is already another USB-serial converter attached to your system, the new port will be `/dev/ttyUSB1` or `/dev/ttyUSB2` etc. .

Windows

On a MS-Windows system, it might be necessary to install the driver software. If there is already some other devices using FTDI chips, this driver will be available already. Otherwise the driver has to be installed. You'll find the driver software on the CD in the subdirectory `/DRIVERS`.
The bridge has a standard FTDI USB chip. There are drivers for every version of MS-Windows available on the FTDI website.

USB Com Port assignment

MS-Windows assigns a COM port automatically.
In order to find out which port has been assigned, please check the MS-Windows device manager.
In the device manager you'll find "Ports – COM & LPT".
In this example, windows has put the SeaTalk NMEA bridge on COM4



SeaTalk <-> NMEA Bridge

NMEA Input- and Output Port selection

All OUT-ports are always enabled :

The Out-ports - NMEA-OUT, RS232 TxD and USB - are always enabled.

The SeaTalk NMEA bridge always sends data to the NMEA-OUT port, the RS232 TxD pin and to the USB port.

You can - for example - send data from the SeaTalk NMEA bridge to a Computer (USB) **and** a GMDSS radio (NMEA-OUT) at the same time.

The IN-port is selectable :

The bridge can **receive** NMEA data from **either NMEA-IN or** from **RS232** RxD pin.

It can not receive data from NMEA-IN and RS232 RxD at the same time.

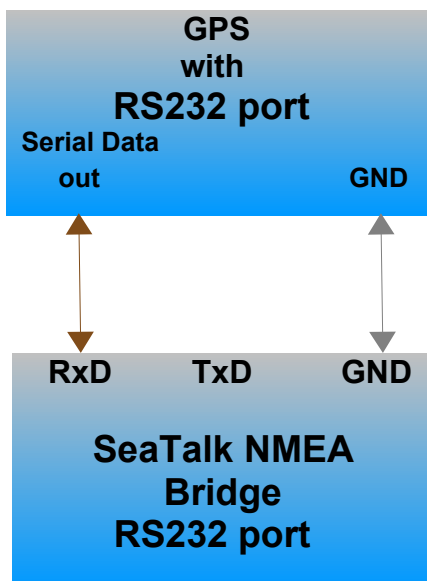
The user has to select, which IN-port is used for receiving NMEA data.

Input port is selected in the configuration screen or with special command \$SNBSE
See chapter "Special functions and configurations"

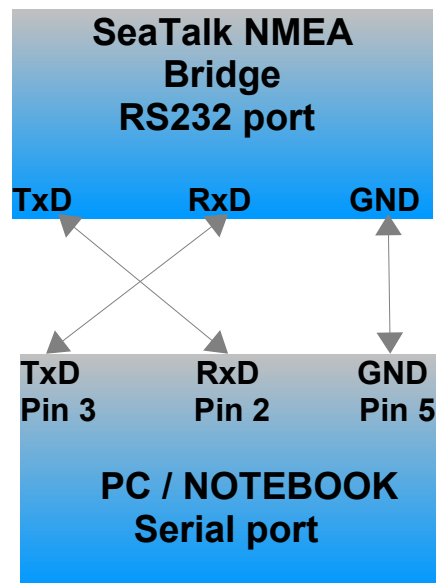
34	0 = Input is RS232 port 1 = Input is NMEA port
----	---

Connection examples

Hand-held GPS to bridge

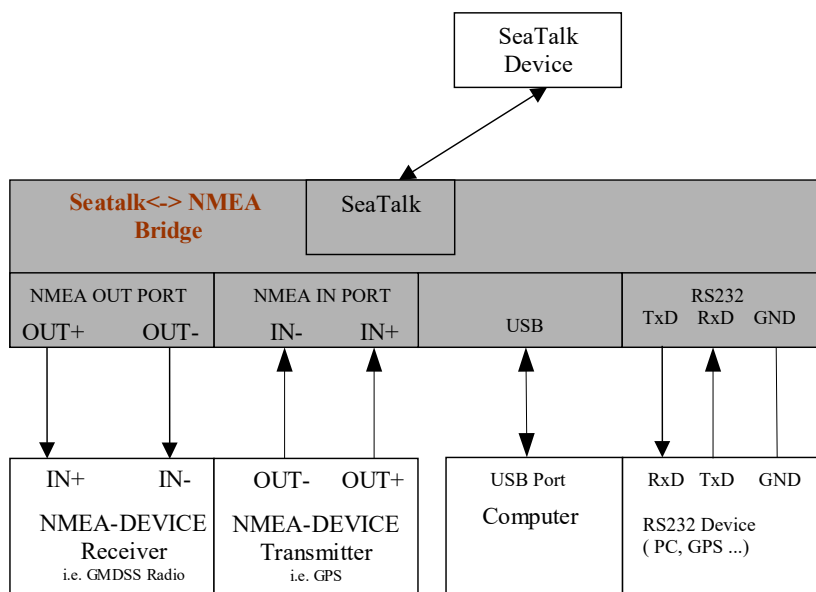


Bridge to PC



SeaTalk <-> NMEA Bridge

Data Flow



- **Received SeaTalk** data are translated into NMEA and sent to NMEA-OUT port **and** to the RS232 TxD pin **and** to the USB port.
- **Received NMEA** data from the **NMEA-IN** port are sent to NMEA-OUT **and** to the RS232 TxD pin **and** USB port.
They are also translated into SeaTalk data and send to the SeaTalk port.
- **Received NMEA** data from the **RS232** RxD pin are sent to NMEA-OUT **and** to the RS232 TxD pin **and** USB port.
They are also translated into SeaTalk and send to the SeaTalk port.
- **Received NMEA** data from the **USB** Port are sent to NMEA-OUT port **and** to the RS232 TxD pin.
They are also translated into SeaTalk and send to the SeaTalk port.

SeaTalk <-> NMEA Bridge

NMEA Input

NMEA sentences can be received from the NMEA-IN or RS232 port and from the USB port.

Processing of NMEA data starts, when a complete NMEA sentence has been received.

If the received sentence contains a checksum, this checksum is used to check for communication errors. If the checksum does not match the sentence, the received NMEA sentence is discarded.

If the sentence does not contain a checksum, the sentence is always regarded as valid.

After complete reception and checksum verification the sentence is sent to the NMEA-OUT port, to the RS232 port and to the USB port.

(This function can be switched off by control setting – see page 24 Configuration ID #4)

If the received sentence is known to the system, the sentence information is extracted and processed. Processed data are shown on the display and sent to the SeaTalk port.

At this time the following NMEA sentences can be received:

NMEA ID	Description
\$xxAPB	Autopilot sentence "B"
\$xxBWC	Bearing and distance to waypoint
\$xxDBT	Depth below transducer
\$xxDPT	Depth below keel
\$xxGLL	Position
\$xxGGA	# of satellites
\$xxHDM	Heading magnetic
\$xxHDG	" "
\$xxMWV	Wind angle wind speed (true & app)
\$xxMTW	Water temperature
\$xxRMC	Speed over ground, course over ground, Latitude, longitude, time, date
\$xxRMB	Route & waypoint Information
\$xxVHW	Speed through water
\$xxVLW	Total / Trip mileage
\$xxVTG	Velocity / Course made good
\$xxVWR	Relative wind speed and angle
\$xxZDA	Date & time

Special NMEA-like sentences

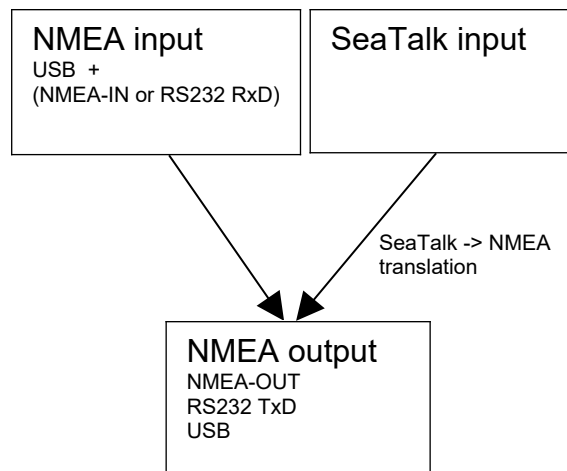
\$STALK	Special SeaTalk datagram
\$SNBSE	Board configuration
\$SWVERSION	Display board software version
\$SWUPDATE	Update board software

SeaTalk <-> NMEA Bridge

NMEA Output

All valid NMEA sentences – whether processed by the converter or not – are forwarded to the NMEA-OUT port and to the USB Port. If the NMEA-OUT port is busy, the sentence is temporarily stored in memory and transmitted as soon as the NMEA-OUT port becomes free.

The converter also continuously checks for new incoming SeaTalk data. Incoming SeaTalk data is converted to NMEA Data and transferred to the NMEA-OUT and the USB port.



The following NMEA sentences can be sent :

\$IIDBT	Depth below transducer
\$IIDPT	Optional \$IIDPT can be sent instead of \$IIDBT
\$IIVHW	Speed t. water
\$IIMTW	Water temperature
\$IIVLW	Total / Trip mileage
\$IIMWV	Wind angle & wind speed (true and apparent)
\$IIHDM	Heading compass
\$IIRMC	Speed over ground, course over ground, latitude, longitude, UTC time, date
\$IIGLL	Optional an additional \$IIGLL sentence can be sent for position information
\$IIRSA	Rudder angle
\$STALK	special SeaTalk datagram
\$SNBSE	special system configuration datagram

SeaTalk <-> NMEA Bridge

SeaTalk Input

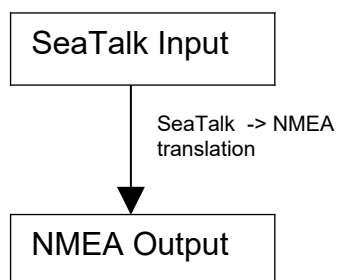
When a SeaTalk datagram was received, the system checks if this datagram is known and should be processed. When the datagram is known, the datagram parameters are extracted, stored and converted to an NMEA sentence.

Any unknown datagram is ignored.

(Exception: \$STALK is sent even for unknown datagrams)

At this time the following SeaTalk datagrams can be received.

- 00 Depth
- 10 Wind angle
- 11 Wind speed
- 20 Speed through water
- 21 Trip mileage
- 22 Total mileage
- 23 Water temperature
- 25 Total & trip mileage
- 26 Speed through water
- 27 Water temperature
- 30 Lamp intensity
- 50 Latitude
- 51 Longitude
- 52 Speed over ground
- 53 Course over ground
- 54 UTC time
- 56 Date
- 58 Latitude & Longitude
- 84 Compass heading
- 89 Compass ST40 heading
- 9C Compass heading & rudder position



SeaTalk <-> NMEA Bridge

SeaTalk Output

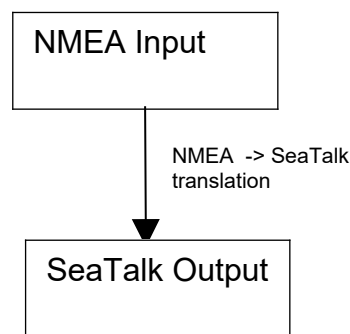
The converter periodically checks if any new data has arrived from one of the NMEA- or the USB port. Newly arrived data are converted to SeaTalk and written to the SeaTalk. The bridge checks if the SeaTalk bus is free, or it is currently used by any other instrument. If the bus is in use, the converter waits for a while, and tries again.

Collision detection

Every single bit sent out to the SeaTalk bus is read back again and checked for successful transmission. If the transmission was corrupted, the transmission is stopped immediately. When the bus becomes free, the transmission will be started again autocratically.

At this time the following SeaTalk data can be sent

00	Depth
10	Wind angle
11	Wind speed
20	Speed through water
25	Total & Trip mileage
27	Water temperature
30	Lamp intensity
50	Latitude
51	Longitude
52	Speed over ground
53	Course over ground
54	Time
56	Date
57	Number of sats, DD horiz. dilution of position
85	Navigation to waypoint info
82	Target waypoint name
89	Compass ST40 heading
9E	Waypoint definition
A2	Arrival info



Same type of Data on NMEA & SeaTalk

Information available from like instruments on both buses (SeaTalk & NMEA) are not converted. As soon as information is not updated on one bus within 30 seconds, conversion is stated again

Example:

We have a depth sounder on the SeaTalk bus and another depth sounder on the NMEA bus. So, on both sides depth information is available.

In this case no depth information is transferred from one bus to the other.

If depth information is not updated within 30 sec. on one bus, sending to the other bus is activated again.

Special functions and configuration

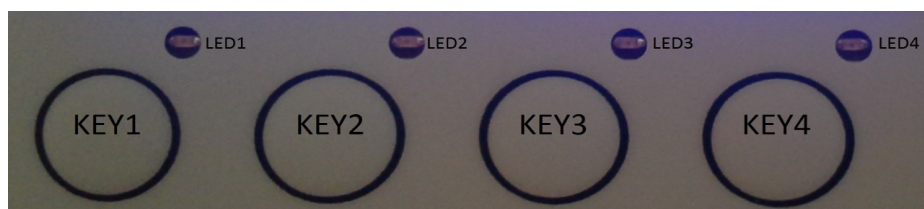
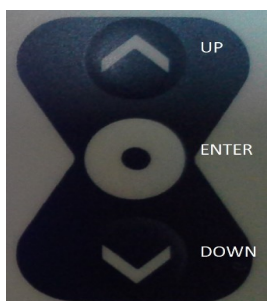
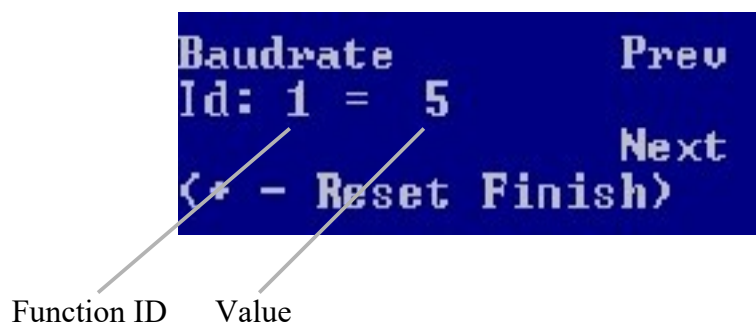
Configuration screen

The SeaTalk NMEA converter can be configured to meet the users requirements.

- The configuration can be set in a special configuration screen.
- Configuration settings are stored in an internal eeprom.

→ To enter the configuration screen, press key ENTER for 5 seconds.

Settings are changed by using Key-1 to Key-4, Key-UP, Key-DOWN and Key-ENTER



Select Function ID

Key-UP = previous ID
Key-DOWN = next ID

Change Value

Key-1 = value plus
Key-2 = value minus
Key-3 = reset value to factory default
Key-4 = configuration is finished

Select ID you would like to change using Key-UP / Key-DOWN
Change value for this ID with Key-1 / Key-2
Finish configuration with Key-4

→ For a list of function ID's and values – see page 24.

SeaTalk <-> NMEA Bridge

Configuration example

Example 1:

In this example we configure the bridge, so that the NMEA baud rate is changed to 38400 baud.

- Find function ID for baud rate in table on page 24.
- Function ID for baud rate is **1**
- Find value for 38400 baud in table on page 24.
- Value for 38400 baud is **8**

1	Set NMEA port baud rate 1 = 300 baud 2 = 600 baud 3 = 1200 baud 4 = 2400 baud 5 = 4800 baud (Default) 6 = 9600 baud 7 = 19200 baud 8 = 38400 baud
----------	--

- Enter Configuration menu by pressing Key-ENTER for 5 seconds.
- Press Key-DOWN. You will see ID: 1 = 5
- Press Key-1 until you see ID:1 = 8
- Press Key-4 to leave configuration menu.

After power off/on, the NMEA baud rate will be set to 38400.

Example 2 :

In this example we configure the bridge, so that it will read NMEA data from it's RS232-RxD port instead of it's NMEA-IN port.

- Find function ID for NMEA-IN port in table on page 24.
- Function ID for baud rate is **34**
- Find value for RS232 port in table on page 24.
- Value for RS232 port is **0**

34	0 = Input is RS232 port 1 = Input is NMEA port
----	---

- Enter Configuration menu by pressing Key-ENTER for 5 seconds.
- Press Key-DOWN until you will see ID: 34 = 1
- Press Key-2 until you see ID: 34 = 0
- Press Key-4 to leave configuration menu.

After power off/on, the NMEA-IN port will be RS232 port.

SeaTalk <-> NMEA Bridge

Configuration commands

The SeaTalk NMEA converter can be configured to meet the users requirements.

The configuration is made by sending a NMEA-like sentence. The settings are stored in an EEPROM.

The configuration sentence is :

\$SNBSE,address,data<CR><LF>

(Optionally a checksum can be appended \$SNBSE,address,data*XX<CR><LF>)

(SNBSE = **S**ea**T**alk **N**MEA **B**ridge **S**et **E**eprom)

Configuration settings are read when the bridge gets switched on. So when you change the configuration you need to switch it off/on to activate the changes.

How to set the configuration

Connect the bridge to a PC using the USB port.

Open a terminal program (i.e. hyperterm) and set it to 4800 baud, 8 bit, no parity, no handshake.

Type " \$xxx " and press ENTER



Bridge responds with " \$xxx ". When you receive the \$xxx, connection to your bridge is established and working properly. If \$xxx does not appear after you pressed ENTER, check connection, setting of com-port, baud rate etc.

Example :

In this example, we configure the bridge, so that every incoming SeaTalk sentence will be sent to the PC as \$STALK,xx,yy sentence.

In your terminal program enter

\$SNBSE,0,1



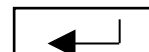
The bridge will respond with

\$SNBSE,0,1

Next time you switch the bridge on it will send every incoming SeaTalk sentence to the PC as a \$STALK,xx,yy,zz ... sentence.

How to read current setting

In your terminal program, enter \$SNBSE,Function-Id



The bridge will respond with \$SNBSE,Function-Id,data

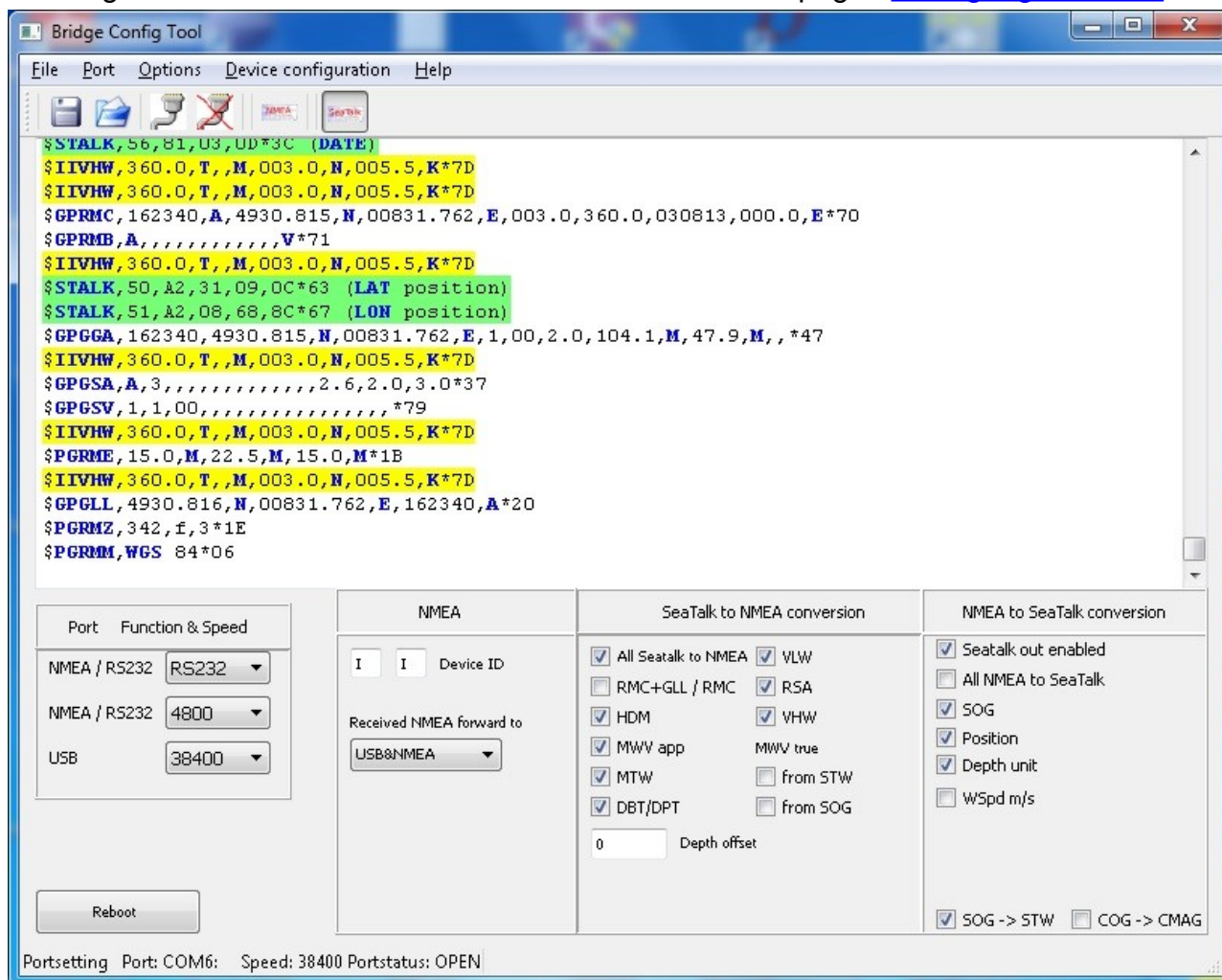
→ For a list of function ID's and values – see page 24.

SeaTalk <-> NMEA Bridge

Configuration PC software

Configuration setting can also be made with a PC.

A configuration software can be downloaded from our webpages www.gadgetPool.de



This software is also useful for SeaTalk network monitoring.

SeaTalk <-> NMEA Bridge

Configuration Id's

Function ID	Value
0	1 = Send out every incoming SeaTalk datagram as "\$STALK....." to NMEA 0 = Do not generate \$STALK,xx,yy sentence for each incoming SeaTalk datagram If you don't really need this function – better switch it OFF. It causes additional load on the NMEA Bus.
1	Set NMEA port baud rate 1 = 300 baud 2= 600 baud 3= 1200 baud 4 = 2400 baud 5 = 4800 baud (Default) 6 = 9600 baud 7 = 19200 baud 8 = 38400 baud any other value defaults to 4800 baud Baud rate is changed at next start of the converter
2+3	Prefix for generated NMEA sentence - Character 1+2 Every NMEA sentence generated from the system begins with this two letters Default = "II" (Integrated Instrumentation) WARNING: You have to enter the ASCII value of the character, not the character itself. Example : To set character 1 to "I" and character 2 to "A" \$SNBSE,2,73 (Character "I" is a 73 in ASCII) \$SNBSE,3,65 (Character "A" is a 65 in ASCII) See ASCII table
4	1= Echo every incoming NMEA sentence to NMEA Out port 2= Echo every incoming NMEA sentence to USB port 3= Echo every incoming NMEA sentence to USB port and NMEA port 4 =Echo NMEA received from NMEA to USB / received from USB to NMEA 0 = Do not echo incoming NMEA sentences
5	N.A:
6	1 = Send \$IIVHW sentence when new data from SeaTalk arrives 0 = Do not send \$IIVHW sentence
7	1 = Send \$IIHDM sentence when new data from SeaTalk arrives 0 = Do not send \$IIHDM sentence
8	1 = Send \$IIMWV sentence when new data from SeaTalk arrives 0 = Do not send \$IIMWV sentence
9	1 = Send \$IIDBT sentence when new data from SeaTalk arrives 0 = Do not send \$IIDBT sentence
10	1 = Send \$IIMTW sentence when new data from SeaTalk arrives 0 = Do not send \$IIMTW sentence
11	1 = Send \$IIVLW sentence when new data from SeaTalk arrives 0 = Do not send \$IIVLW sentence
12	1 = LCD light on/off is sent to SeaTalk? 0 = Do not send light on/off to SeaTalk
13	1 = Send welcome message after power up 0 = Do not send welcome message

SeaTalk <-> NMEA Bridge

14	0 = Speed over ground from NMEA input is sent to SeaTalk as speed over Ground and as speed through water (Needed for ST60 Wind instrument, that does not recognize speed over ground) 1 = Normal operation. No special SOG => STW handling) (default) (See Webpage www.gadgetPool.de for more on this special ST60 Wind function.
15	0 = Every incoming SeaTalk datagram is sent to NMEA as "\$STALK,xxx,yyy" – no matter if the system can interpret the SeaTalk data or not. 1 = Normal operation. Only SeaTalk sentences known to the system are echoed as \$STALK,xxx,yyy Only valid if function id "0" is switched on.
16	0 = Don't send any data to the SeaTalk port. SeaTalk port is READ-ONLY 1 = Send data to SeaTalk
17	0 = Display wind speed in knots. 1= Display wind speed in m/s
18	0 = Don't send SOG to SeaTalk 1 = Send SOG to SeaTalk
19	0 = Don't send position to SeaTalk 1= Send position to SeaTalk
20	0 = Display depth on SeaTalk instrument in feed, 1 = display in meters
21	1=set time only with NMEA ZDA sentence 0=set time also via RMC sentence ... (time of last position fix)
22	0=send only RMC sentence for position to NMEA 1=send GLL and RMC sentence for position to NMEA
23+24	23+24 Offset of depth transducer. In mm (+- 1000th Meter) If this value is set to -1, the bridge will send DBT NMEA sentence and no offset will be used. If this values is set to something between -32000 to 32000, the bridge will produce DPT sentences including the offset.
25	Reserved (used for SeaTalk-NMEA-Link)
26	1 = send NMEA RSA sentence for rudder angle data 0 = don't send RSA sentence
27	0 = no bit set = Start display normal 1 = bit 1 set = Start after boot-up with display page 3
28	Not used
29	1 = send waypoint data to SeaTalk 0 = don't send waypoint data to SeaTalk
30	0 = Send NMEA Cog as COG and CMAG to SeaTalk. 1 = 1 = don't combine
31	Not used
32	Not used
33	Calculate TRUE Wind data and send as \$IIMWV Sentence 0 = No True wind calculation 1 = True wind calculation from water speed 2 = True wind calculation from SOG
34	0 = Input is RS232 port 1 = Input is NMEA port
35	0 = Display SOG as BigDigits in km/h on display page 4 1 = Display SOG as BigDigits in knots on display page 4

SeaTalk <-> NMEA Bridge

36	<p>Set USB port baud rate</p> <p>1 = 300 baud</p> <p>2= 600 baud</p> <p>3= 1200 baud</p> <p>4 = 2400 baud</p> <p>5 = 4800 baud (Default)</p> <p>6 = 9600 baud</p> <p>7 = 19200 baud</p> <p>8 = 38400 baud</p> <p>any other value defaults to 4800 baud</p> <p>Baud rate is changed at next start of the converter</p>
37	<p>1= Do UART Test on boot-up</p> <p>0= No UART Test on boot-up</p>
38	<p>1= Send NMEA sentences created from SeaTalk data to NMEA-OUT port</p> <p>0= No NMEA sentences created from SeaTalk data are sent to NMEA-OUT.</p> <p>Some NMEA devices can not work with sentences like depth,position, etc. They only understand proprietary configuration sentences. With this function you can switch off sending normal NMEA data to that device.</p> <p>NMEA data created from SeaTalk data will only be sent to USB port.</p>

Special NMEA like commands

The \$STALK sentence

The converter can process a special NMEA-like sentence.
With this special sentence any SeaTalk command can be sent to SeaTalk.

\$STALK,cc,p1,p2...,pn*xx

cc = SeaTalk command

p1 = Parameter 1


p2 = Parameter 2

..


*xx = NMEA checksum (optional) .

Example :

Switch on display illumination on all devices on the SeaTalk network.

Enter \$STALK,30,00,0C 

Switch off display illumination on all devices on the SeaTalk network.

Enter \$STALK,30,00,00 

This special sentence will be sent to the NMEA bus for every received SeaTalk datagram
– regardless as to whether it was recognized and processed or not.
(This function can be switch off by control setting – see below)

The \$SWVERSION command

\$SWVERSION<ENTER>

Display software version.

Software update (config tool)

The software of the multiplexers is constantly extended and improved.

You can find new software versions on our website.

(<http://www.gadgetpool.de>)

Every update consists of two files. One file containing the actual software, and one file containing configuration preset data.

The file with the ending .hex contains the new multiplexer software.

This file must be loaded with every software update.

The file with the ending .eep contains configuration preset data.

This can be loaded optionally, to restore the device's settings and configurations to factory default values.


If the .eep file is not used during a software update, all the old configurations and settings remain as they are.

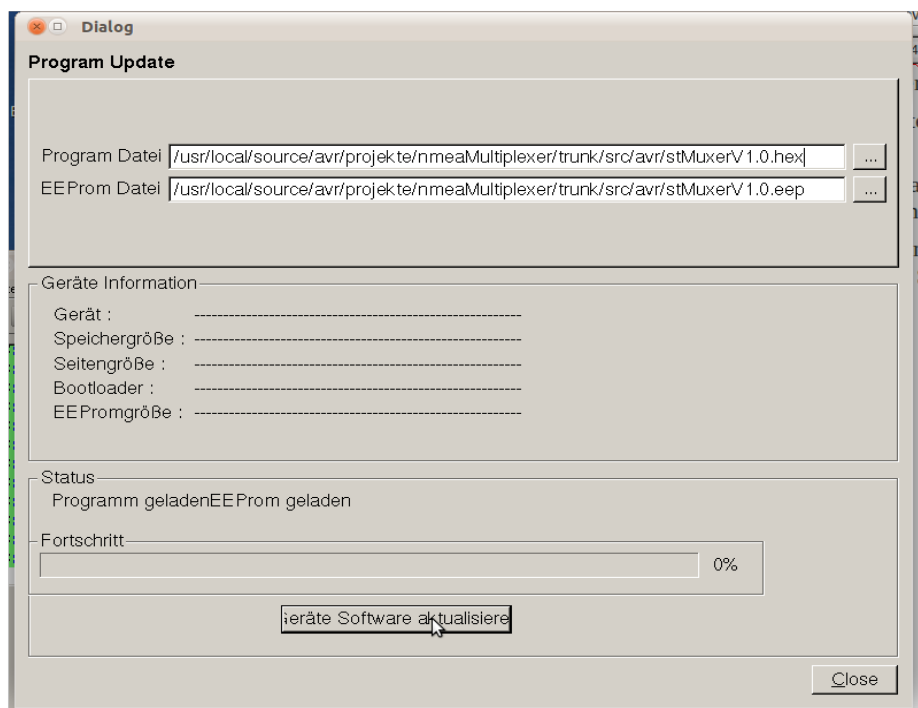
Please read any manuals, texts or descriptions that might come with a new software version.

If you'd like to update your multiplexer to a new software version, please get the latest software release from the gadgetPool website. Save the two files (xxx.eep xxx.hex) on your computer harddisk.

You find the software update function in the configuration program.

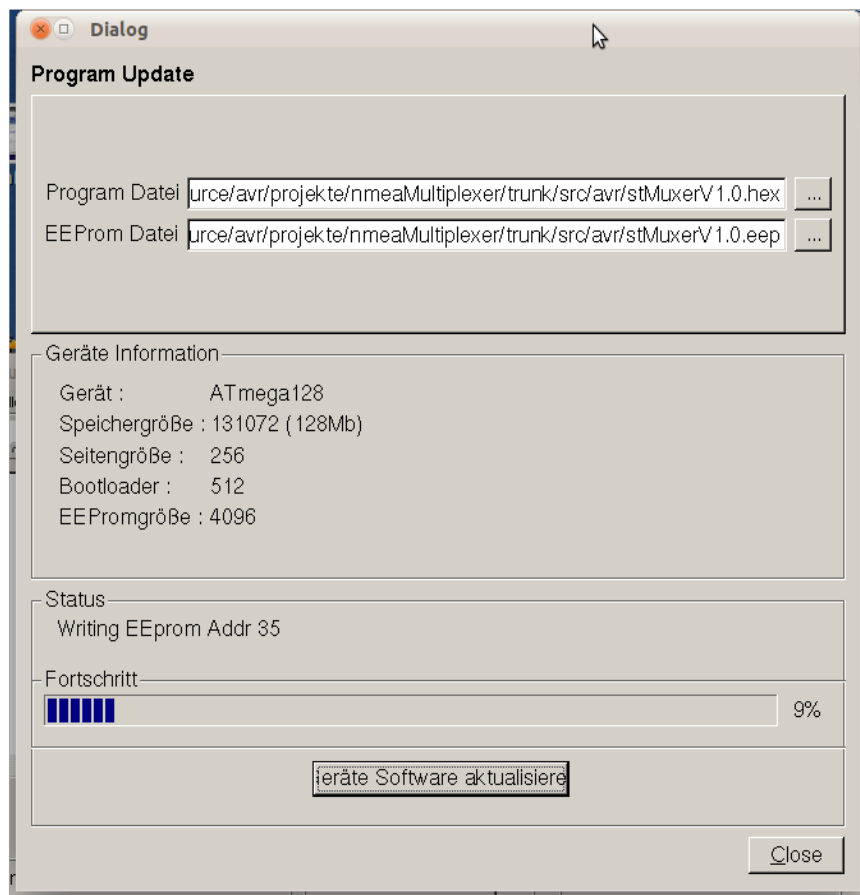
Menue → Device configuration → *Softwareupdate*.

Select the two firmware files with the Button  and press "Update Software".



During update process, the multiplexer **MUST NOT BE SWITCHED OFF**.

SeaTalk <-> NMEA Bridge



After the status bar has reached 100%, close the software update window. Close the config Tool and reboot the multiplexer (Power off/on)

SeaTalk <-> NMEA Bridge

Software update (megaload)

The board software also can be updated by using the Megaload Software.

If you find anything missing in the software, if you should find any software errors or if you have new ideas – just sent a mail to FWallenwein@tklinux.de

New / revised software can be sent by E-Mail and the SeaTalk NMEA bridge owner can update the controller software him/herself.

Bootstrap method advantages :

No hardware programmer needed.

Just a USB connection to PC and a PC software is needed.

Fuses and bootstrap software can not be erased accidentally.

Latest software versions can be found at <http://www.gadgetPool.de>

Bootstrap Loader Method

Connect the SeaTalk NMEA bridge to your PC (using USB Port)

Open a terminal program (i.e. hyperterm) and set it to 4800 baud, 8 bit, no parity, no handshake.

Type “ \$xxx “ and press ENTER 

Bridge responds with “ \$xxx “. When you receive the \$xxx, connection to your bridge is established and working properly. If \$xxx does not appear after you pressed ENTER, check connection, setting of com-port, baud rate etc.

Enter \$SWUPDATE 

The bridge will respond with

Software Update Function will start in 40 sec.

...

Close the terminal program.

Start the supplied bootstrap software (Megaload) on the PC.


Open the image file you would like to program into the bridge.

Select your serial port in bootstrap software

Select **9600 baud**

After the 40 sec timeout, the bootstrap software finds the SeaTalk NMEA bridge and flashes the new software.

The default timeout of 40 seconds can be adjusted.

Just enter \$SWUPDATE,xxx  , where xxx is the timeout in seconds.

SeaTalk <-> NMEA Bridge

SeaTalk & NMEA conversion Table

Function	SeaTalk ID	NMEA	Stalk -> NMEA	NMEA->Stalk
Depth	0	DBT	X	X
Speed t. water	20	VHW	X	X (See SNBSE,14)
Speed t. water	26	VHW	X	
Trip mileage	21	VLW	X	
Total mileage	22	VLW	X	
Water temperature	23	MTW	X	
Water temperature	27	MTW	X	X
Total / Trip mileage	25	VLW	X	X
Wind angle	10	MWV	X	X
Wind speed	11	MWV	X	X
Compass	84	HDM (VHW)	X	
Compass ST40	89	HDM	X	X
Speed over ground	52	RMC	X	X
Course over ground	53	RMC	X	X
Lamp intensity	30		X	Push button
Latitude	51	RMC	X	X
Latitude	51	GLL		X
Longitude	50	RMC	X	X
Longitude	50	GLL		X
UTC time	54	RMC	X	X
UTC time	54	ZDA		X
# of sats	57	GGA		X
Date	56	RMC	X	X
Date	56	ZDA		X
Special NMEA->ST	any	\$STALK	X	X
Special config.	-	\$SNBSE		

SeaTalk <-> NMEA Bridge

Technical data

Instrument		
Width	:	141.5 mm
Height	:	75.0 mm
Depth	:	37.5 mm
Weight	:	165.0 grams

Clearance hole		
Width	:	104 mm
Height	:	66 mm

Minimum cable clearance behind panel : 40 mm

Supply voltage	:	8 to 30 Volt DC
Current consumption	:	60 mA idle, 50 mA backlighting off, 100 mA peak (12 Volt)

News and Info on the web

If you have any question or suggestions – there is a SeaTalk NMEA bridge user forum on our web page. <http://www.gadgetPool.de>

The software will be improved constantly. Please check <http://www.gadgetpool.de> for the latest software version.

SeaTalk <-> NMEA Bridge

Change History

```
// Version 3.17 Fixed some compiler warnings and some typos in comments
//           Fixed timer error that disabled push buttons and timeouts.
// Version 3.16 Just a test release. Fix issues with precision, water temp ping/pong
// Version 3.15 Fixed problem in Serial Port Test (Loop back Test )
// Version 3.14 Current/Drift. New feature for testing.( F2 pressed long )
// Version 3.13 Bugfix. Endless Loop "Uart-Test" when no keyboard attached.
// Version 3.12 Can read/display true wind from NMEA.
//           Before it was only calculated from SeaTalk App-Wind Data
//
// Version 3.11 Bugfix after test on boat.
//           moved Autopilot keys,
// Version 3.10 Added Autopilot Functions ( F4 pressed long )
//           Bugfix - when NMEA source stopped sending data in the middle of a
//           sentence, bridge waited until next CR/LF was received.
//           Bugfix - when key was pressed long, wait until key released once
//           before continue key processing.
//           Bugfix - error in stNmea.c when sending STW ( used || instead of | )
//
// Version 3.01 Minor updates Bootup message, HW-Test Message.
//           LED Testroutine on bootup fixed.
//           Software version message added checksum and BRIDGE message.
//           to be consistent with Multiplexer boot message.
//           Needed for PC Tool for configuration.
//
// Version 3.00 New SeaTalk Nmea Bridge ATmega128 board with USB and SD card.
//           Based on Version 2.0 for AtMgea1284P
```